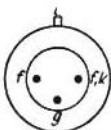


Type Herst.	SRS 453 WF
U_f I_f Heizart	5,6 180 ~
Verw. Kbn-Lg. Kbn-Ø	STt ⁷⁵⁾ 336 (37) 155
U_a $U_{\theta 5}$ $U_{\theta 4}$ $U_{\theta 3}$ $U_{\theta 2}$ $U_{\theta 1}$	30 000 3 ³⁰⁾ — — 2200 -700
I_a $I_{\theta 2}$	70 40
S D R_i	16 12 —
R_k R_a $R_{\theta 2}$	— 0,35 —
$U_{\theta 1} \sim$ V $N_a \sim$	$T_a = 220^\circ$ $ck/a =$ 0,005
U_b max $U_{\theta 2}$ max N_a max $N_{\theta 2}$ max $R_{\theta 1}$ max	40 000 3600 1200 400 $I_k = 7 \text{ A}$
$c_{\theta/a}$	27



SRS 453